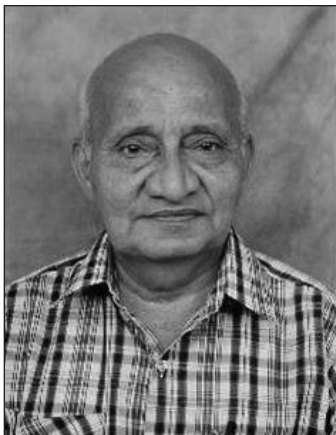


Professor Laxminarayan Sanna.Bhat : *Obituary*



Born : 28.08.1930

Died : 25.11.2013

Professor Bhat Laxminarayan Sanna, commonly known as Prof L. S. Bhat, also endearingly addressed as Bhat sahib, by his students and close associates, passed away on 25th Nov, 2014 following a massive heart attack in New Delhi. Ms Bhat and other members of the family were by his side when the end came. Professor Bhat is survived by his wife, two sons, his daughter and several grand children. The institute of Indian Geographers deeply mourns his death. In his demise, Indian Geography has lost an able researcher and a trendsetter in Regional Planning studies and practices.

Professor L.S.Bhat was born in a small village, Holangadde, in Kumata taluka of Uttar Kannad district of Karnatak, on 28th August, 1930. He spent his early

life in Uttar Kannad district, then a part of Bombay presidency. During the early 1950's, soon after his graduation in Science with Geography, he was awarded Daxina Fellowship. This enabled him to register as a student for M.Sc. (by Research) in Geography in Karnatak College, Dharwad. Thus began his geographical journey with rigour and enthusiasm. He was very fortunate in having Professor C.D.Deshpande, as his mentor and guide. Having come in close contact with stalwarts like Prof V.L.S. Prakasa Rao and Professor Andrew Learmonth, he imbibed their academic qualities that guided him in his future life.

The most important position Dr. Bhat held was as a professor of geography and Regional Planning at the Indian Statistical

Institute (ISI), New Delhi. Here he came in contact with Prof. P. C. Mahalanobis with whom he worked on several projects. While working at the ISI, he was also associated with the Planning Commission of India, New Delhi, an association that lasted for over a decade between 1961- and 1974. He was awarded the Leverhulme Research Fellowship, and worked as a consultant to the United Nations ESCAP at Bangkok. In the late sixties, he was a visiting faculty at the SGS, Australian National University, Canberra. He was also a regular visiting faculty at Jawaharlal Nehru University, Delhi University, and the School of Architecture and Planning, New Delhi.

He has to his credit a large number research publications, including books on Regional Planning in India, Micro-level planning, Integrated Area development, Planning regions and Regional Survey of Mysore State (with V.L.S.P.Rao), Impact of Metropolitan City on the surrounding Region, (co-author), and Contributions to the Economic Geography of India (with A.T.A. Learmonth). In recognition of his contributions to Indian Geography and Regional Planning, the Indian Council of Social Science Research, New Delhi, awarded him the prestigious National fellowship, to work on 'Spatial Perspectives in Decentralized Planning.' He was instrumental in the formulation and implementation of Research and Training Programmes, related to regional planning in geography, in several universities.

He was a founder member and General Secretary of National Association of Geographers, India, for several years. He has steered the Association successfully, through the initial period of teething trouble.

On the social front too, Prof. Bhat's contribution is no less significant. He initiated the Delhi Karnataka Sangh and served as its Secretary and President. He was felicitated as a distinguished Kannadiga during Karnataka Rajyotsava – 99 celebrations, at New Delhi on 20.11.1999, conducted jointly by the Department of Information and Publicity, Government of Karnataka, and the Delhi Karnataka Sangh. Despite his personal tragedy of having a special childhood disability, he bravely faced the harsh realities of life. He took active interest in the Delhi chapter of Handicapped Children Parents Association (HCPA).

The works of Prof Bhat will continue to inspire professional geographers for a long time to come.

K.M.Kulkarni

Professor of Geography (Retd)

Department of Geography

Gujarat University

Ahmedabad-380 009